



---

TECHNICAL RIDER 2015,V1



---

## VENUE

capacity  
420 pax

acoustics  
the ceiling is covered with acoustic panels to ensure a very dry sound.

---

## PA SYSTEM

Main

6x Alcons Audio RR12

Fullrange horizontal Linearray System, RBN602 Pro Ribbon + 12" Customized Speaker incl. Phaseplug; 65Hz-20kHz +/-3dB, Dispersion H30°xV60° asymetrcal 40°down/20°up, 800W/1600W, SPL program/peak 132dB/138dB, 8 Ohm2x K&F

1x Lambda Labs DH 18 Digitalhorn

Extreme High Power Subbass in hornloaded discrete element architecture; 1 x 18" ultra long excursion; driver with 5,3" VC and epoxy treated cone; aluminium demodulation rings; 3600W RMS; 30-130Hz in DMode; 28-120Hz in S-Mode; 4 Ohm

All Speakers are controlled by  
Xilica XD8080 Speakermanagement and Alcons Audio Sentinel10

Monitoring

4x Lambda Labs CX 2A Monitor

High Power 2-way Coaxial Monitor with integrated 1000W RMS amplification modules; DSP signal processor with preset selector onboard; additional active DrumFill on demand



---

## STAGE

6 x 5 meters, 60cm high  
clearance 2,75 meters  
Drumrisers max. 20cm high

Power on stage  
2x 32A for lights  
1x 63A for lights  
1x 32A for Backline  
1x 32A Spare

---

## LIVE EQUIPMENT

Mics  
1x Sennheiser E901  
1x Sennheiser E902  
4x Sennheiser E904  
2x Sennheiser E906  
2x Sennheiser E914  
3x Sennheiser E614  
4x Sennheiser E945  
2x Shure SM58

Stands  
11x big mic stand  
5x small mic stand  
1x git stand

Wireless  
2x Sennheiser EW165

DI  
6x BSS AR133

---

## DJ EQUIPMENT

2x Technics SL-1210 Mk II  
2x Pioneer CDJ-2000  
1x Pioneer DJM-900 Nexus  
we are equipt with a DJ desk

---

## OTHER

2x CO2 Canon  
Confetti FAN XL



---

## LIGHT

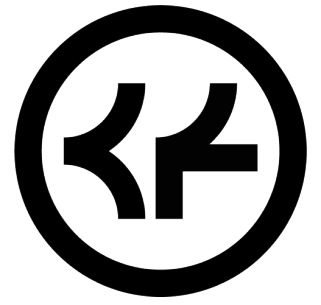
Mixingdesk  
Chamsys MaxiWing

Lights  
6x MARTIN Rush Mh1  
8x AYRTON Easy Color 2 Moving Head  
4x DTS Scena 500 Fresnel  
2x ETC Source Four jr  
2x ETC Source Four jr with ROSCO I-CUE Intelligent Mirror  
34x PAR 56  
12x PAR 64  
2x JBSYSTEM Light Led Victory Scan  
35x CAMEO Studio Mini PAR 7 x 8W QC (ambience)  
4x SHOWTEC Sunstrip Active  
4x Luster (ambience)  
1x PAR 36 (Ambiente)  
2x EURODMX STROBE 2500W  
2x Stairville SF-3000 Fog Machine  
1x Look Unique 2.1 Hazer  
8x SHOWTEC Pinpoint Black Par 36 bulb

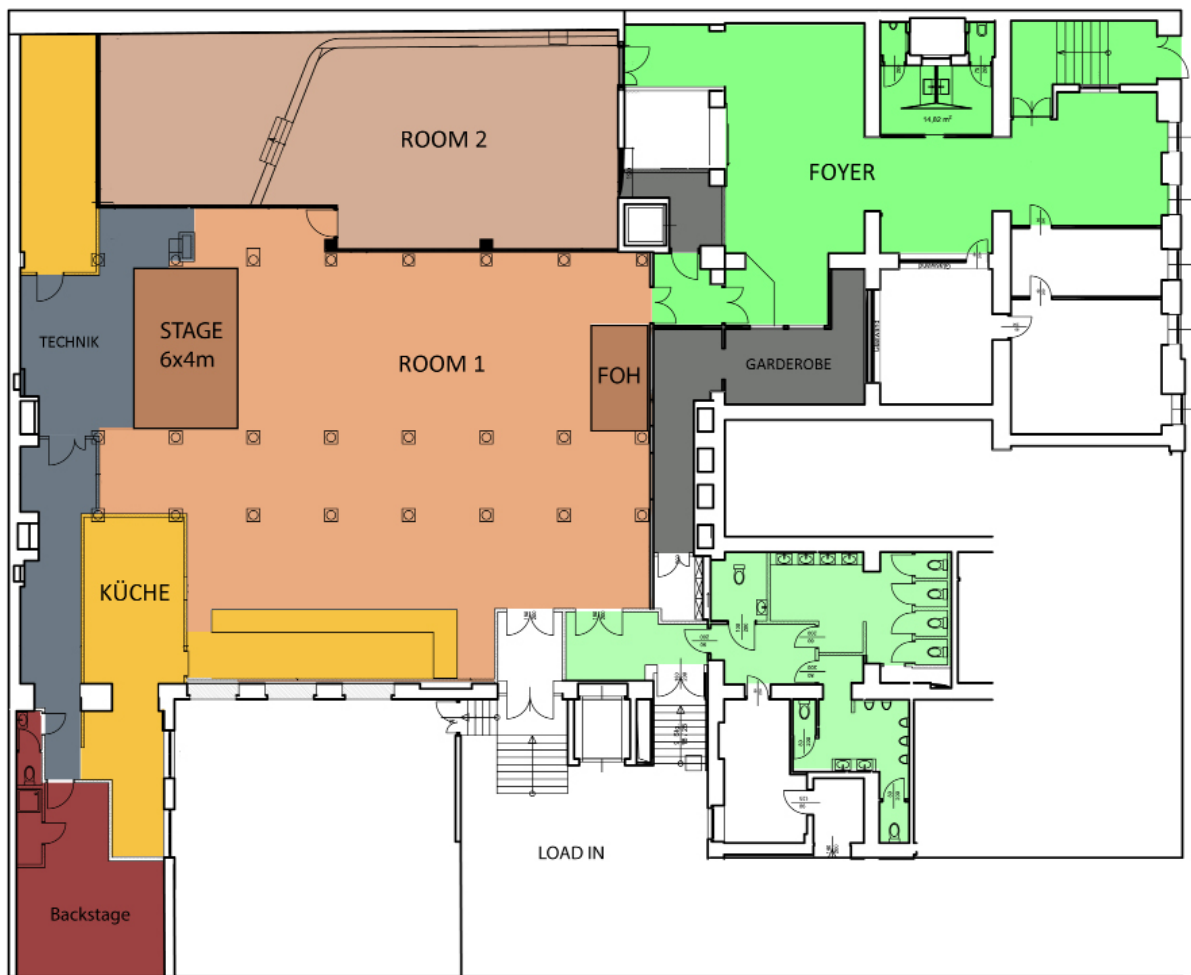
---

## VISUALS

16 beamers cover 300° of the room  
powered by a custom designed system based on Resolume 4 Arena  
visualists are advised to contact CF-booking office and arrange a setting.  
2x beamer in the lounge  
7xTV's in the lounge  
1x beamer in the foyer



## LOCATION





## ROADMAP



Chaya Fuera  
Kandlgasse 19-21  
1070 Wien  
Austria